

SANITARY  
SOLUTIONS<sup>INC.</sup>

*Bulldog Valves...Bulldog Tough.<sup>TM</sup>*

### **Air Blow Check Valves**



**SSABCV-Size-Alloy**



**SSABCV-FNPT-Size-Alloy**



**SSABCV-RHB-Size-Alloy**



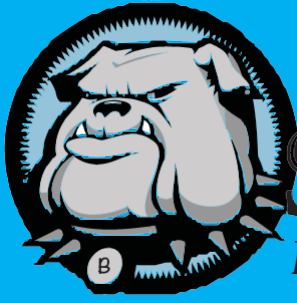
**Air Blow, Y-Ball, Check Valve**

**Sanitary Solutions stocks T316L, 1.5"—6.00" Air Blow Check Valves with either the 3/8" Air Line Coupler, 1/2" Female NPT or rubber hose barb connection.**

**Sanitary Solutions Air Blow Check Valves are designed to evacuate lines of product or Clean in Place solutions and providing air movement to product in either a tank or other form of vessel.**

**Sanitary Solutions Air Blow Check Valves comes standard with an EPDM/ Micron Filtered Disc Gasket, Stem Seat, washer/spring to conform to 3-A practices.**

**1-888-909-3569 or 1-855-640-7871**



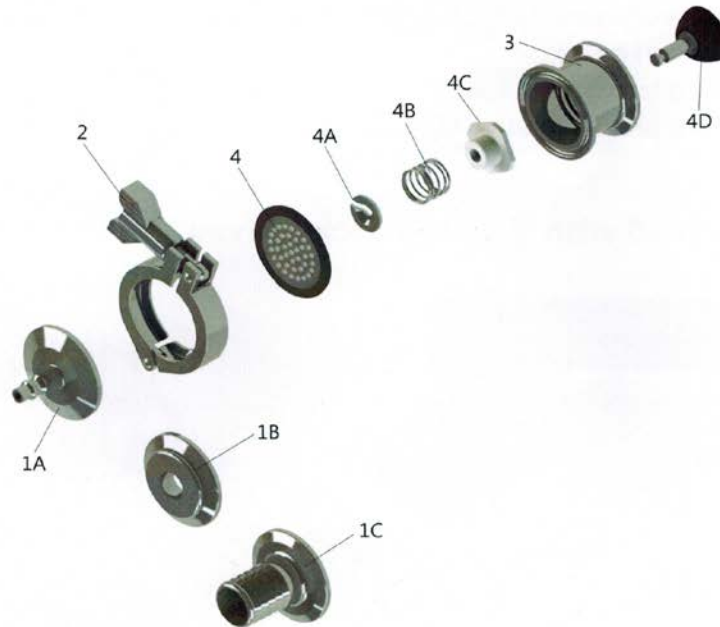
# SANITARY SOLUTIONS INC.

*Bulldog Valves...Bulldog Tough.™*

## Air Blow Check Valve Material List

### Air Blow Check Valves

#### Material List



Item	Description	Material	Quantity
1A	1/4" air line quick connect	316L	1
1B	1/2" NPT cap	316L	1
1C	1" hose barb	316L	1
2	single pin clamp	CF8	1
3	valve body	316L	1
4	perforated disc	EPDM/316L	1
4A	spring retainer	304	1
4B	spring	304	1
4C	stem guide	Nylon	1
4D	stem and plug	EPDM/316L	1