



SANITARY SOLUTIONS^{INC.}

Bulldog Fittings...Bulldog Tuff.

Sanitary Solutions Schedule 5, 10, 40 Pipe to Tube Fittings



Sanitary Solutions Schedule 5, 10, 40 Fittings meet all 3A requirements
 Sanitary Solutions Schedule 5, 10, 40 Fittings Stocking Alloys: T304 or T316L
 Sanitary Solutions Schedule 5, 10, 40 Fittings Sizes: 1" – 8" OD Tube x Pipe
 Note: OD Tube and Pipe Sizes do not interchange!

Sanitary Solutions Schedule 5 x Tube OD Fittings Part Number Breakdown:

<u>SS</u>	<u>Part Number</u>	<u>Size</u>	<u>Alloy</u>
Sanitary Solutions	14WMV	2"	304 or 316L
	V = Schedule 5 Pipe		

Sanitary Solutions Schedule 10 x Tube OD Fittings Part Number Breakdown:

<u>SS</u>	<u>Part Number</u>	<u>Size</u>	<u>Alloy</u>
Sanitary Solutions	14WMX	2"	304 or 316L
	X = Schedule 10 Pipe		

Sanitary Solutions Schedule 40 x Tube OD Fittings Part Number Breakdown:

<u>SS</u>	<u>Part Number</u>	<u>Size</u>	<u>Alloy</u>
Sanitary Solutions	14WMZ	2"	304 or 316L
	Z = Schedule 40 Pipe		

www.sanitarysolutionsinc.com



SANITARY SOLUTIONS INC.

Bulldog Fittings...Bulldog Tuff.

SS13MHMV---Schedule 5 Heavy Duty Single Pin Clamp, 304

Pipe (Size)	A	Part Number 304	SPR @ 70° F *
1"	2.122	SS13MHMV-1-304	500
1.5"	2.654	SS13MHMV-1.5-304	450
2"	3.185	SS13MHMV-2-304	400
2.5"	3.717	SS13MHMV-2.5-304	350
3"	4.263	SS13MHMV-3-304	250
4"	5.263	SS13MHMV-4-304	150
6"	7.700	SS13MHMV-6-304	100

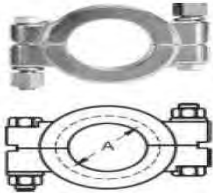
*** Tighten Wing Nut to 25 in. lb. of torque**



SS13MHPV---Schedule 5 Heavy Duty Bolted Clamp, 304

Pipe (Size)	A	Part Number 304	SPR @ 70° F *
1"	2.046	SS13MHPV-1-304	750
1.5"	2.578	SS13MHPV-1.5-304	500
2"	3.110	SS13MHPV-2-304	500
2.5"	3.460	SS13MHPV-2.5-304	500

*** Tighten Bronze Nut to 20 Ft. lb. of torque**



SS14WMV--- Schedule 5 Pipe Short-Weld Ferrule

Pipe (Size)	A	B	C	Part Number 304	Part Number 316L
1"	0.500	1.315	1.185	SS14WMV-1-304	SS14WMV-1-316L
1.5"	0.500	1.900	1.770	SS14WMV-1.5-304	SS14WMV-1.5-316L
2"	0.500	2.375	2.245	SS14WMV-2-304	SS14WMV-2-316L
2.5"	0.500	2.875	2.709	SS14WMV-2.5-304	SS14WMV-2.5-316L
3"	0.500	3.500	3.334	SS14WMV-3-304	SS14WMV-3-316L
4"	0.625	4.500	4.334	SS14WMV-4-304	SS14WMV-4-316L
6"	0.875	6.625	6.407	SS14WMV-6-304	SS14WMV-6-316L
8"	0.875	8.625	8.407	SS14WMV-8-304	SS14WMV-8-316L

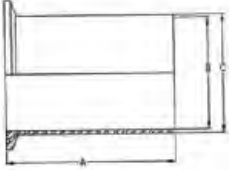




SANITARY SOLUTIONS INC.

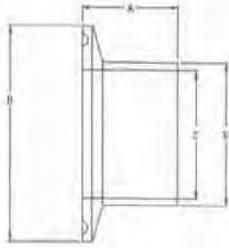
Bulldog Fittings...Bulldog Tuff.

SS14WLMV--- Schedule 5 Pipe *Light Tank* Weld Ferrule



Pipe (Size)	A	B	C	Part Number	
				304	316L
1"	3.000	1.185	1.315	SS14WLMV-1-304	SS14WLMV-1-316L
1.5"	3.000	1.770	1.900	SS14WLMV-1.5-304	SS14WLMV-1.5-316L
2"	3.000	2.245	2.375	SS14WLMV-2-304	SS14WLMV-2-316L
2.5"	4.000	2.709	2.875	SS14WLMV-2.5-304	SS14WLMV-2.5-316L
3"	4.000	3.334	3.500	SS14WLMV-3-304	SS14WLMV-3-316L
4"	4.000	4.334	4.500	SS14WLMV-4-304	SS14WLMV-4-316L
6"	6.000	6.407	6.625	SS14WLMV-6-304	SS14WLMV-6-316L

SS14MVW--- Schedule 5 Pipe *Heavy Wall* Tank Ferrule



Pipe (Size)	A	B	C	D	Part Number
					304
1"	1.625	1.984	1.185	1.531	SS14MVW-1-304
1.5"	1.625	2.516	1.770	2.109	SS14MVW-1.5-304
2"	1.750	3.047	2.245	2.594	SS14MVW-2-304
2.5"	1.750	3.579	2.709	3.109	SS14MVW-2.5-304
3"	1.812	4.125	3.334	3.562	SS14MVW-3-304
4"	2.125	5.125	4.334	4.562	SS14MVW-4-304
6"	2.125	7.195	6.407	6.625	SS14MVW-6-304
8"	2.125	9.200	8.407	8.625	SS14MVW-8-304
10"	2.125	11.32	10.48	10.75	SS14MVW-10-304
12"	2.125	13.31	12.42	12.75	SS14MVW-12-304

SS14WMX--- Schedule 10 Pipe *Short Weld* Ferrule



Pipe (Size)	A	B	C	Part Number	
				304	316L
1"	0.500	1.315	1.097	SS14WMX-1-304	SS14WMX-1-316L
1.5"	0.500	1.900	1.682	SS14WMX-1.5-304	SS14WMX-1.5-316L
2"	0.500	2.375	2.157	SS14WMX-2-304	SS14WMX-2-316L
2.5"	0.500	2.875	2.635	SS14WMX-2.5-304	SS14WMX-2.5-316L
3"	0.500	3.500	3.260	SS14WMX-3-304	SS14WMX-3-316L
4"	0.625	4.500	4.260	SS14WMX-4-304	SS14WMX-4-316L
6"	0.875	6.625	6.357	SS14WMX-6-304	SS14WMX-6-316L
8"	0.875	8.625	8.329	SS14WMX-8-304	SS14WMX-8-316L

www.sanitarysolutionsinc.com

Sanitary Solutions Inc.

1 - 888 - 909 - 3569

Prices are subject to change without notice; please call before you quote



SANITARY SOLUTIONS INC.

Bulldog Fittings...Bulldog Tuff.

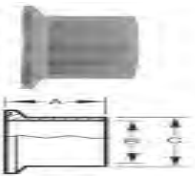
SSL14AMV--- Schedule 5 Pipe Long-Weld Ferrule

Pipe (Size)	A	B	C	Part Number 304	Part Number 316L
1"	1.125	1.185	1.315	SSL14AMV-1-304	SSL14AMV-1-316L
1.5"	1.125	1.770	1.900	SSL14AMV-1.5-304	SSL14AMV-1.5-316L
2"	1.125	2.245	2.375	SSL14AMV-2-304	SSL14AMV-2-316L
2.5"	1.125	2.709	2.875	SSL14AMV-2.5-304	SSL14AMV-2.5-316L
3"	1.125	3.334	3.500	SSL14AMV-3-304	SSL14AMV-3-316L
4"	1.125	4.334	4.500	SSL14AMV-4-304	SSL14AMV-4-316L
6"	1.500	6.407	6.625	SSL14AMV-6-304	SSL14AMV-6-316L



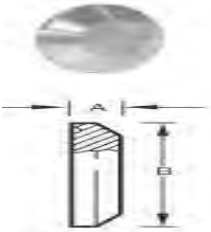
SSL14AMX--- Schedule 10 Pipe Long-Weld Ferrule

Pipe (Size)	A	B	C	Part Number 304	Part Number 316L
1"	1.125	1.097	1.315	SSL14AMX-1-304	SSL14AMX-1-316L
1.5"	1.125	1.682	1.900	SSL14AMX-1.5-304	SSL14AMX-1.5-316L
2"	1.125	2.157	2.375	SSL14AMX-2-304	SSL14AMX-2-316L
2.5"	1.125	2.635	2.875	SSL14AMX-2.5-304	SSL14AMX-2.5-316L
3"	1.125	3.260	3.500	SSL14AMX-3-304	SSL14AMX-3-316L
4"	1.125	4.260	4.500	SSL14AMX-4-304	SSL14AMX-4-316L



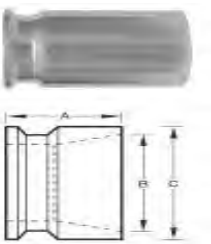
SS16AMV-- Schedule 5 Pipe End Cap

Pipe (Size)	A	B		Part Number 304	Part Number 316L
1"	0.250	1.984		SS16AMV-1-304	SS16AMV-1-316L
1.5"	0.250	2.516		SS16AMV-1.5-304	SS16AMV-1.5-316L
2"	0.250	3.047		SS16AMV-2-304	SS16AMV-2-316L
2.5"	0.250	3.579		SS16AMV-2.5-304	SS16AMV-2.5-316L
3"	0.313	4.125		SS16AMV-3-304	SS16AMV-3-316L
4"	0.313	5.125		SS16AMV-4-304	SS16AMV-4-316L
6"	0.437	7.195		SS16AMV-6-304	SS16AMV-6-316L
8"	0.437	9.200		SS16AMV-8-304	SS16AMV-8-316L
10"	0.500	11.32		SS16AMV-10-304	SS16AMV-10-316L



SS19MPV--- Clamp x Schedule 5 Pipe Butt-weld Adapter

Pipe (Size)	A	B	C	Wall Thickness	Part Number 304
1/2"	1.125	0.710	0.840	0.065	SS19MPV-0.50-304
3/4"	1.125	0.920	1.050	0.065	SS19MPV-0.75-304
1"	1.125	1.185	1.315	0.065	SS19MPV-1-304
1.5"	1.125	1.770	1.900	0.065	SS19MPV-1.5-304
2"	1.125	2.245	2.375	0.065	SS19MPV-2-304
2.5"	1.125	2.709	2.875	0.083	SS19MPV-2.5-304
3"	1.125	3.334	3.500	0.083	SS19MPV-3-304
4"	1.125	4.334	4.500	0.109	SS19MPV-4-304
6"	1.125	6.407	6.625	0.109	SS19MPV-6-304



www.sanitarysolutionsinc.com

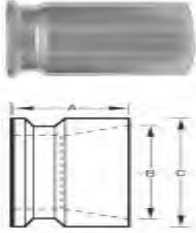


SANITARY SOLUTIONS INC.

Bulldog Fittings...Bulldog Tuff.

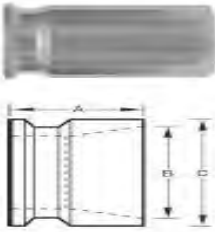
SS19MPX--- Clamp x Schedule 10 Pipe Butt weld Adapter

Pipe (Size)	A	B	C	Wall Thickness	Part Number
1/2"	1.125	0.674	0.840	0.083	SS19MPX-0.50-304
3/4"	1.125	0.884	1.050	0.083	SS19MPX-0.75-304
1"	1.125	1.097	1.315	0.109	SS19MPX-1-304
1.5"	1.125	1.682	1.900	0.109	SS19MPX-1.5-304
2"	1.125	2.157	2.375	0.109	SS19MPX-2-304
2.5"	1.125	2.635	2.875	0.109	SS19MPX-2.5-304
3"	1.125	3.260	3.500	0.109	SS19MPX-3-304
4"	1.125	4.260	4.500	0.120	SS19MPX-4-304
6"	1.125	6.357	6.625	0.134	SS19MPX-6-304



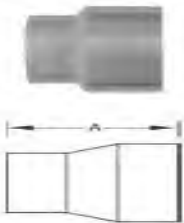
SS19MPZ--- Clamp x Schedule 40 Pipe Butt weld Adapter

Pipe (Size)	A	B	C	Wall Thickness	Part Number
1/2"	1.125	0.622	0.840	0.109	SS19MPZ-0.50-304
3/4"	1.125	0.824	1.050	0.113	SS19MPZ-0.75-304
1"	1.125	1.049	1.315	0.133	SS19MPZ-1-304
1.5"	1.125	1.610	1.900	0.145	SS19MPZ-1.5-304
2"	1.125	2.067	2.375	0.154	SS19MPZ-2-304
2.5"	1.125	2.469	2.875	0.203	SS19MPZ-2.5-304
3"	1.125	3.068	3.500	0.216	SS19MPZ-3-304
4"	1.125	4.026	4.500	0.237	SS19MPZ-4-304
6"	1.125	6.065	6.625	0.280	SS19MPZ-6-304



SS19WV--- Tube OD Butt weld x Schedule 5 Pipe Butt weld Adapter

Pipe (Size)	A	Tube OD	Tube Wall Thickness	Pipe ID	Part Number
1"	1.500	1.000	0.065	1.185	SS19WV-1-304
1.5"	1.500	1.500	0.065	1.770	SS19WV-1.5-304
2"	2.500	2.000	0.065	2.250	SS19WV-2-304
2.5"	3.000	2.500	0.083	2.700	SS19WV-2.5-304
3"	3.000	3.000	0.083	3.334	SS19WV-3-304
4"	4.000	4.000	0.109	4.334	SS19WV-4-304
6"	6.000	6.000	0.109	6.407	SS19WV-6-304



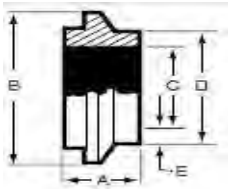


SANITARY SOLUTIONS INC.

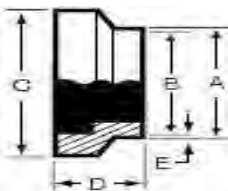
Bulldog Fittings...Bulldog Tuff.



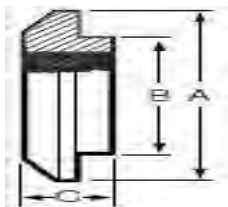
SS19WX--- Tube OD Butt weld x Schedule 10 Pipe Butt weld Adapter					
Pipe (Size)	A	Tube OD	Tube Wall Thickness	Pipe ID	Part Number 304
1"	2.000	1.000	0.065	1.102	SS19WX-1-304
1.5"	2.500	1.500	0.065	1.682	SS19WX-1.5-304
2"	2.500	2.000	0.065	2.162	SS19WX-2-304
2.5"	2.500	2.500	0.083	2.640	SS19WX-2.5-304
3"	2.500	3.000	0.083	3.260	SS19WX-3-304
4"	3.000	4.000	0.109	4.260	SS19WX-4-304



SS14WIV--- Schedule 5 Pipe Short-Weld Male I-Line Ferrule					
Pipe (Size)	A	B	C	D	Part Number 304
1"	0.945	2.000	1.185	1.315	SS14WIV-1-304
1.5"	1.024	2.648	1.770	1.900	SS14WIV-1.5-304
2"	1.142	3.317	2.245	2.375	SS14WIV-2-304
2.5"	1.220	3.868	2.709	2.875	SS14WIV-2.5-304
3"	1.343	4.882	3.334	3.500	SS14WIV-3-304
4"	1.343	5.882	4.334	4.500	SS14WIV-4-304



SS15WIV--- Schedule 5 Pipe Short-Weld Female I-Line Ferrule					
Pipe (Size)	A	B	C	D	Part Number 304
1"	0.945	1.185	2.000	0.945	SS15WIV-1-304
1.5"	1.024	1.770	2.648	1.024	SS15WIV-1.5-304
2"	1.142	2.245	3.317	1.142	SS15WIV-2-304
2.5"	1.220	2.709	3.868	1.220	SS15WIV-2.5-304
3"	1.343	3.334	4.882	1.343	SS15WIV-3-304
4"	1.343	4.334	5.882	1.343	SS15WIV-4-304

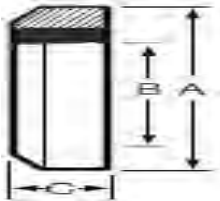


SS16AI-14IV-- Schedule 5 Pipe Male I-Line End Cap					
Pipe (Size)	A	B	C	Part Number 304	Part Number 316L
1"	2.000	1.756	0.500	SS16AI-14IV-1-304	SS16AI-14IV-1-316L
1.5"	2.648	2.244	0.585	SS16AI-14IV-1.5-304	SS16AI-14IV-1.5-316L
2"	3.317	2.756	0.750	SS16AI-14IV-2-304	SS16AI-14IV-2-316L
2.5"	3.868	3.316	0.750	SS16AI-14IV-2.5-304	SS16AI-14IV-2.5-316L
3"	4.882	4.316	0.750	SS16AI-14IV-3-304	SS16AI-14IV-3-316L
4"	5.882	5.316	0.750	SS16AI-14IV-4-304	SS16AI-14IV-4-316L

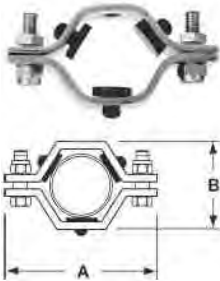


SANITARY SOLUTIONS INC.

Bulldog Fittings...Bulldog Tuff.

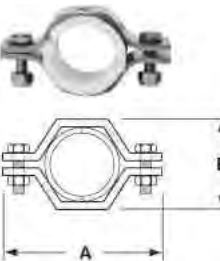


SS16AI-15IV-- Schedule 5 Pipe Female I-Line End Cap					
Pipe (Size)	A	B	C	Part Number 304	Part Number 316L
1"	2.000	1.756	0.500	SS16AI-15IV-1-304	SS16AI-15IV-1-316L
1.5"	2.648	2.244	0.585	SS16AI-15IV-1.5-304	SS16AI-15IV-1.5-316L
2"	3.317	2.756	0.750	SS16AI-15IV-2-304	SS16AI-15IV-2-316L
2.5"	3.868	3.316	0.750	SS16AI-15IV-2.5-304	SS16AI-15IV-2.5-316L
3"	4.882	4.316	0.750	SS16AI-15IV-3-304	SS16AI-15IV-3-316L
4"	5.582	5.316	0.750	SS16AI-15IV-4-304	SS16AI-15IV-4-316L



SSPHG--- SS Pipe Hanger with Grommet				
Pipe (Size)	A	B	Grommet Qty/Size	Part Number 304
1/2"	3.625	2.125	3-- 1/2"	SSPHG-0.50-304
3/4"	3.625	2.533	3-- 3/8"	SSPHG-0.75-304
1"	3.625	2.125	3-- 1/4"	SSPHG-1-304
1.5"	4.320	2.813	3-- 1/4"	SSPHG-1.5-304
2"	4.875	3.250	3-- 1/4"	SSPHG-2-304
2.5"	5.375	3.875	3-- 1/4"	SSPHG-2.5-304
3"	6.167	4.320	4-- 1/8"	SSPHG-3-304
4"	7.438	5.125	4-- 1/8"	SSPHG-4-304
5"	8.062	5.625	4-- 1/8"	SSPHG-5-304
6"	9.875	7.125	5-- 1/8"	SSPHG-6-304

Note: 8", 10", & 12" Available



SSPHP-- SS Pipe Hanger with Polypropylene			
Tube OD (Size)	A	B	Part Number 304
1/2"	2.687	2.000	SSPHP-0.50-304
3/4"	2.687	1.562	SSPHP-0.75-304
1"	3.625	2.125	SSPHP-1-304
1.5"	4.312	2.625	SSPHP-1.5-304
2"	4.875	3.125	SSPHP-2-304
2.5"	4.812	3.125	SSPHP-2.5-304
3"	6.000	4.250	SSPHP-3-304
4"	7.500	5.625	SSPHP-4-304
5"	8.375	6.375	SSPHP-5-304
6"	9.750	7.375	SSPHP-6-304

Note: 8", 10", & 12" Available

www.sanitarysolutionsinc.com

Sanitary Solutions Inc.

75

1 - 888 - 909 - 3569

Prices are subject to change without notice; please call before you quote